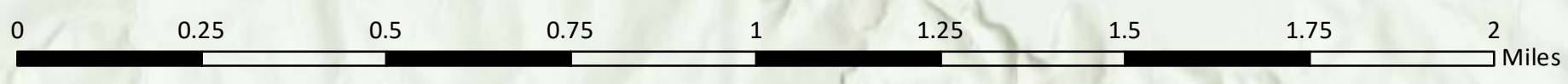
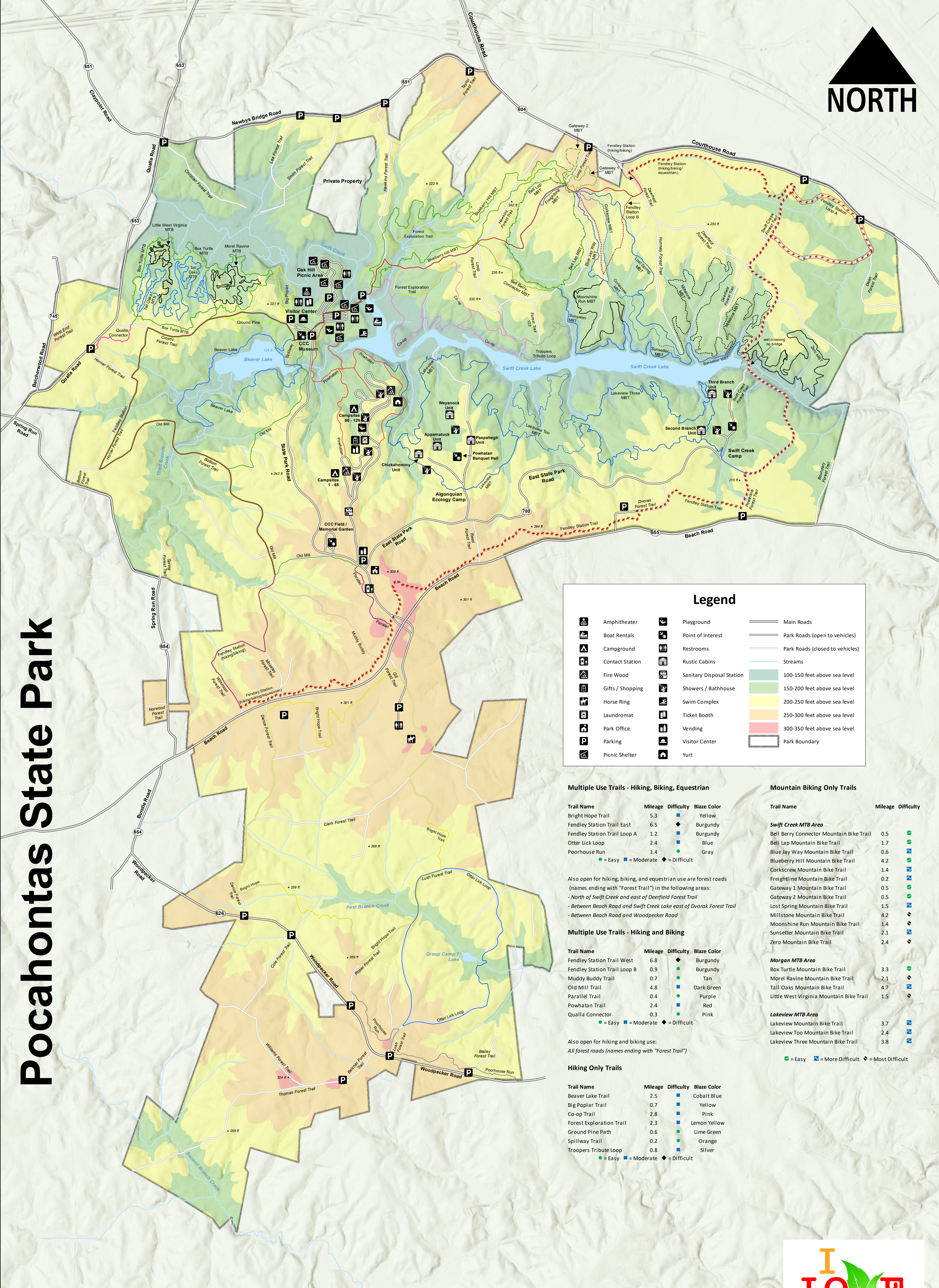




Pocahontas State Park



Legend

	Amphitheater		Playground		Main Roads
	Boat Rentals		Point of Interest		Park Roads (open to vehicles)
	Campground		Restrooms		Park Roads (closed to vehicles)
	Contact Station		Rustic Cabins		Streams
	Fire Wood		Sanitary Disposal Station		100-150 feet above sea level
	Gifts / Shopping		Showers / Bathhouse		150-200 feet above sea level
	Horse Ring		Swim Complex		200-250 feet above sea level
	Laundromat		Ticket Booth		250-300 feet above sea level
	Park Office		Vending		300-350 feet above sea level
	Parking		Visitor Center		Park Boundary
	Picnic Shelter		Yurt		

Multiple Use Trails - Hiking, Biking, Equestrian

Trail Name	Mileage	Difficulty	Blaze Color
Bright Hope Trail	5.3	◆	Yellow
Fendley Station Trail East	6.5	◆	Burgundy
Fendley Station Trail Loop A	1.2	■	Burgundy
Otter Lick Loop	2.4	■	Blue
Poorhouse Run	1.4	●	Gray

● = Easy ■ = Moderate ◆ = Difficult

Also open for hiking, biking, and equestrian use are forest roads (names ending with "Forest Trail") in the following areas:
 - North of Swift Creek and east of Deerfield Forest Trail
 - Between Beach Road and Swift Creek Lake east of Dvorak Forest Trail
 - Between Beach Road and Woodpecker Road

Multiple Use Trails - Hiking and Biking

Trail Name	Mileage	Difficulty	Blaze Color
Fendley Station Trail West	6.8	◆	Burgundy
Fendley Station Trail Loop B	0.9	●	Burgundy
Muddy Buddy Trail	0.7	●	Tan
Old Mill Trail	4.8	■	Dark Green
Parallel Trail	0.4	●	Purple
Powhatan Trail	2.4	■	Red
Qualla Connector	0.3	●	Pink

● = Easy ■ = Moderate ◆ = Difficult

Also open for hiking and biking use:
 All forest roads (names ending with "Forest Trail")

Hiking Only Trails

Trail Name	Mileage	Difficulty	Blaze Color
Beaver Lake Trail	2.5	■	Cobalt Blue
Big Poplar Trail	0.7	■	Yellow
Co-op Trail	2.8	■	Pink
Forest Exploration Trail	2.3	■	Lemon Yellow
Ground Pine Path	0.6	●	Lime Green
Spillway Trail	0.2	●	Orange
Troopers Tribute Loop	0.8	■	Silver

● = Easy ■ = Moderate ◆ = Difficult

Mountain Biking Only Trails

Trail Name	Mileage	Difficulty
Swift Creek MTB Area		
Bell Berry Connector Mountain Bike Trail	0.5	●
Bell Lap Mountain Bike Trail	1.7	■
Blue Jay Way Mountain Bike Trail	0.6	●
Blueberry Hill Mountain Bike Trail	4.2	■
Corkscrew Mountain Bike Trail	1.4	■
Freightline Mountain Bike Trail	0.2	■
Gateway 1 Mountain Bike Trail	0.5	●
Gateway 2 Mountain Bike Trail	0.5	●
Lost Spring Mountain Bike Trail	1.5	■
Millstone Mountain Bike Trail	4.2	■
Moonshine Run Mountain Bike Trail	1.4	■
Sunsetter Mountain Bike Trail	2.1	■
Zero Mountain Bike Trail	2.4	■
Morgan MTB Area		
Box Turtle Mountain Bike Trail	3.3	●
Morel Ravine Mountain Bike Trail	2.1	■
Tall Oaks Mountain Bike Trail	4.7	■
Little West Virginia Mountain Bike Trail	1.5	■
Lakeview MTB Area		
Lakeview Mountain Bike Trail	3.7	■
Lakeview Too Mountain Bike Trail	2.4	■
Lakeview Three Mountain Bike Trail	3.8	■

● = Easy ■ = More Difficult ◆ = Most Difficult



www.virginiastateparks.gov
 1-800-933-7275

Sources: Esri, USGS, NGA, NASA, CGIAR, N Robinson, NCEAS, NLS, OS, NMA, Geodastatysreisen, Rijkswaterstaat, GSA, Geoland, FEMA, Intermap and the GIS user community